

**PRODUCT CODE: HP1B**  
HOOK PLATE



**DESCRIPTION**

Hook Plate

**FINISH**

Black

**MATERIAL**

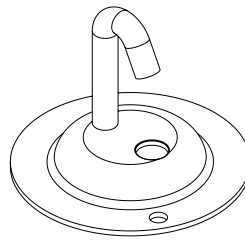
Pressed Steel

**PACKAGING**

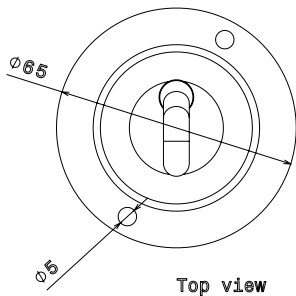
Packed in qty 25

**ADDITIONAL NOTES**

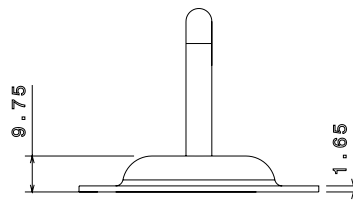
Conforms to BS EN61386-1  
Compliant to LU Standard 1-085 (for use on surface & sub-surface locations)



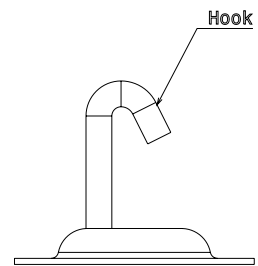
Isometric view



Top view



Front view



Side view